



**DOC WARNER'S**

-EST.

**ALASKA ADVENTURES**

1981-

• EXCURSION INLET, ALASKA •

# Welcome To Doc Warner's!



This material is intended for the sole use of Doc Warner's Alaska Adventures



A special place we call "Doc's"



Doc & Linda

# Contents

## General Info

- 4 - Campus Map
- 5 - First Aid
- 6 - Area Map
- 7 - Meals/Dock Hours
- 8 - Housekeeping
- 9 - Drug & Alcohol Policy

## Boats (13)

- 13 - Safety Boats
- 14 - Check-Out List
- 17 - Anchoring

## Electronics (20)

## Rod & Reel Care (22)

## Knot – Surgeon's Loop (23)

## Salmon

- 30 - Rigging
- 31 - Downriggers
- 34 - Trolling Techniques
- 35 - Landing Salmon/Netting
- 37 - Identifying
- 42 - Catch Care

## Halibut Fishing

- 44 - Methods
- 46 - Equipment & Tackle
- 48 - Baiting
- 49 - Landing
- 51 - Releasing

## Rock Fish

- 54 - Deepwater Release
- 55 - Identifying

## Other Species

- 58 - Sable Fish (Black Cod)
- 59 - Marine Sculpin

# Campus Map



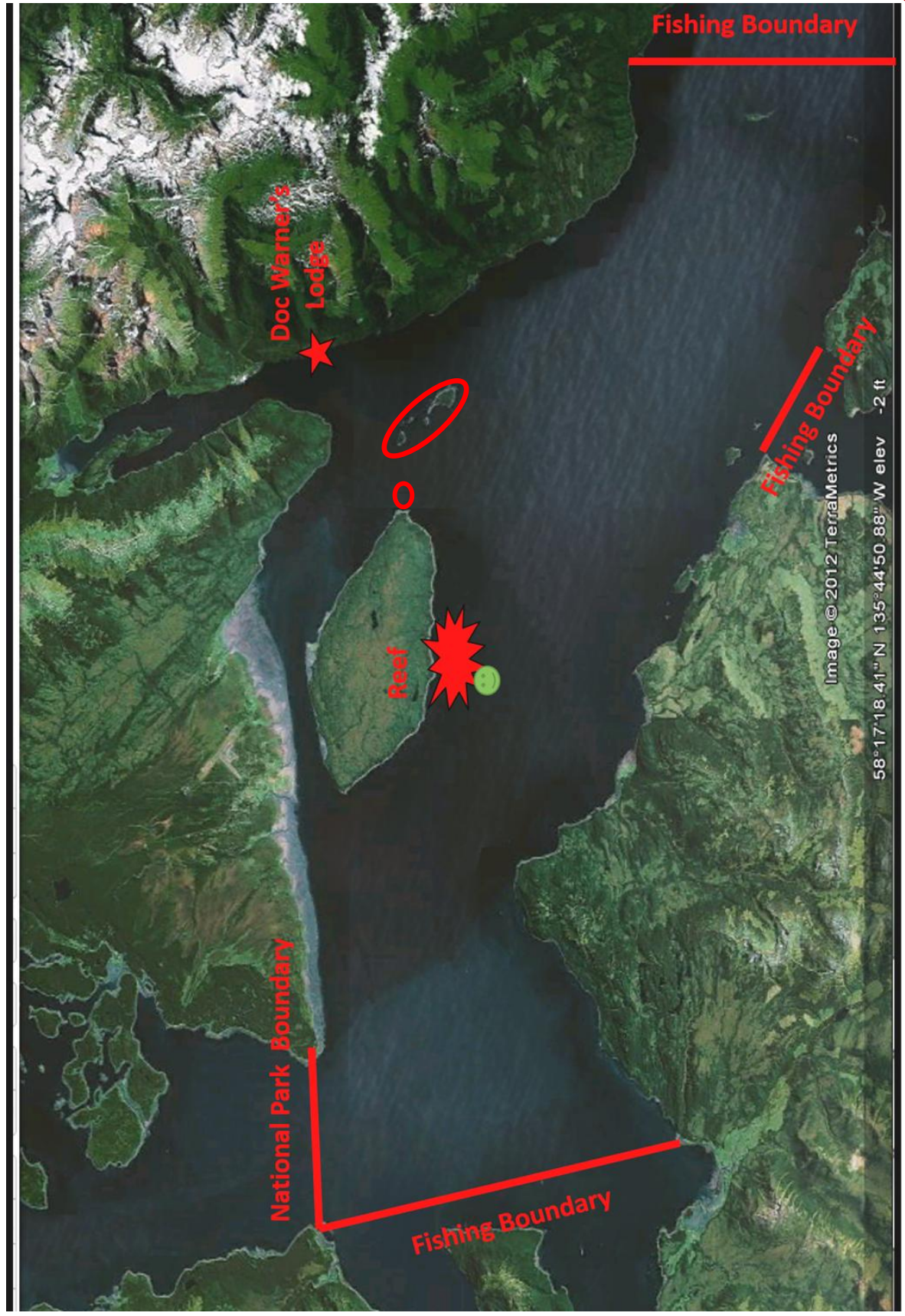
# First Aid

Please report **ALL** injuries to Lodge Office.

- Minor injuries including line cuts and small puncture wounds, **especially those that don't bleed well**, should be reported.
- Minor first aid is rendered in the office.
- Complimentary distilled water is available in the Pro Shop for medical devices (CPAP etc).



# Area Map



# Meals

- Breakfast: Served 5:30 am – 7:30 am.
- Lunch: On the water.
  - Return lunch totes nightly to the kitchen breezeway.
- Dinner: Served 5:00 pm – 7:00 pm.

# Dock Hours

- Early in the season, the dock opens at 5:30 AM. As daylight diminishes, fishing starts later. Current hours are posted in the lodge.
- Evening Boat curfew varies due to daylight hours and will be posted in the lodge.
  - **Friday curfew is always 5:00 pm.**

# Housekeeping

- Drying Room: Dry your raingear and warm up.
- Gazebo: Enjoy relaxing by the wood stove and retelling your catch-of-the-day stories. There's plenty of firewood. Enjoy yourself and get to know your new friends.
- Guest Laundry: Washer/dryers are provided for guest use. Loads are free and include soap and dryer sheets.
- Raingear: Please hang raingear in the Drying Room; do not take raingear into the other buildings.
  - Rinse dirty raingear on the dock.
- Towels: On Wednesday afternoon, exchange your towel for a fresh one in your cabin's common area.
- Extra Bedding: Additional pillows and blankets are available upon request.
- Recycling: Use the **BLUE** buckets for all metal and glass.
  - Place plastics in burnable trash.



# Drug & Alcohol Policies

- Cannabis Products: Per Alaska State law, cannabis and cannabis byproducts are not authorized at Doc Warner's, on the water, or on any public lands.
- Smoking: Picnic tables are set up in smoking areas around the facility.
  - Do not smoke on the dock or at the head of the walkway (see image below) due to proximity to fuel supplies.
  - Do not smoke in buildings or where the wind might blow smoke back into the building.
- Alcohol: Please drink responsibly. Drinking on the boats is prohibited by law. DUI laws apply.
- Illegal Drugs: Only prescription drugs, for which one has a prescription, are permitted.



# Pro Shop

Come visit our Pro Shop for your tackle, clothing, souvenirs, and sundries.

- Open during breakfast and dinner, and any time you ask.
- Additional water bottles and soda.
- We accept cash, most credit cards, and checks.
- Settle your tab on Friday evening.



*Ask staff which artificial attractants are working best!*

# Friday Night

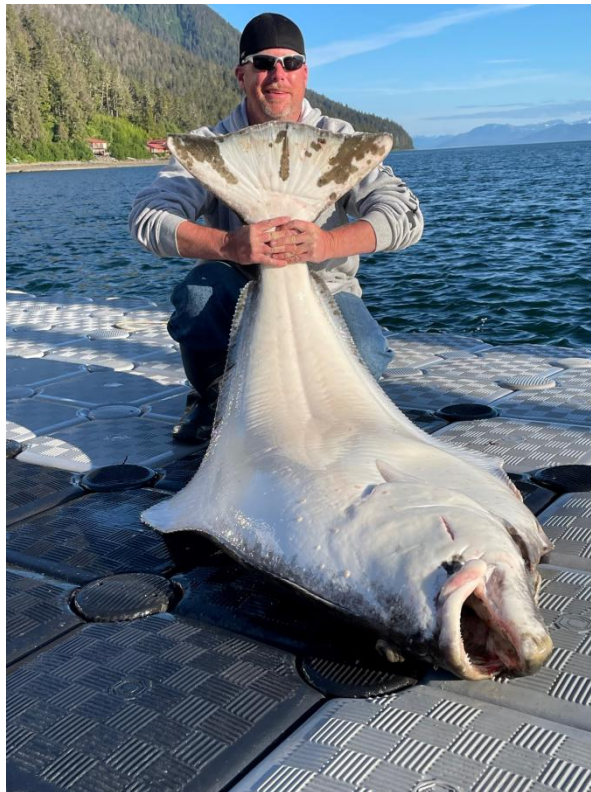
- **Surveys:** Surveys will be emailed to you after your visit. Please let us know how we can improve your stay during the time you are with us. We love hearing from you!
- **Tipping:** Our staff work as a team; tips are pooled and divided among seasonal staff. Management is not included in the pool.
  - Please do not tip seasonal staff individually.
  - The tip box will be on the dessert table.
  - Tips range up to 15% of the trip cost.
- **Facility Tour:** Learn how Doc pulls it together. Tour infrastructure systems such as fresh water, fish processing, power generation and get your questions answered. Join us at 7 pm in the Dining Hall.



# Photography



- Photography: Share your photos with us!
  - FaceBook and Instagram.
    - @docwarnersalaska, #docwarners, #alaska, #fishing
  - Share your memories with friends when you get home!



# Safety Boats

- **Safety Boat staff will:**
  - Render basic first-aid.
  - Render mechanical aid.
  - Guide Salmon.
  - Take photos.
  - Direct “Fish Chat” Monday through Wednesday after dinner upstairs in Harris Hall.
    - Come share stories.
    - Learn about biology.
    - Find out what is working...and what is not.
    - See you there!
  
- **Safety Boat staff will not:**
  - Guide halibut.
    - Come back to the dock for halibut assistance.



# Boat Checkout List

## BOAT CHECKOUT LIST

Boat # \_\_\_\_\_

Date: \_\_\_\_\_

### Mechanical

- Prop  
 Bilge  
 GPS  
 Transducer Angle

### Fishing

- Rods  
 Reels  
 Tackle Box  
 Mooring Rigs  
 Halibut Leaders  
 Swivels Of Each Kind  
 Anchor Zip Ties  
 Salmon Weights  
 Bait Knife  
 Leader Line  
 Rockfish Release  
 Halibut Weights  
 Bait Box  
 Clean Boat Rags

### Boat

- Shark Hook  
 Bat  
 Anchor  
 PVC Body Protector  
 Pole Holders  
 Net  
 Bail Bucket  
 Map

### Safety

- Oar  
 Personal Floatation Devices & Throwable  
 Fire Extinguisher  
 Safety Can with Boat Registration

### Optional Equipment available for checkout at no charge

- 1 Downrigger      OR       2 Downriggers  
 1 Cannon Weight       2 Cannon Weights  
 1 Clip       2 Clips

**\*We know accidents happen...Please report any broken or lost equipment to Mark asap! You are responsible for broken or lost equipment.**

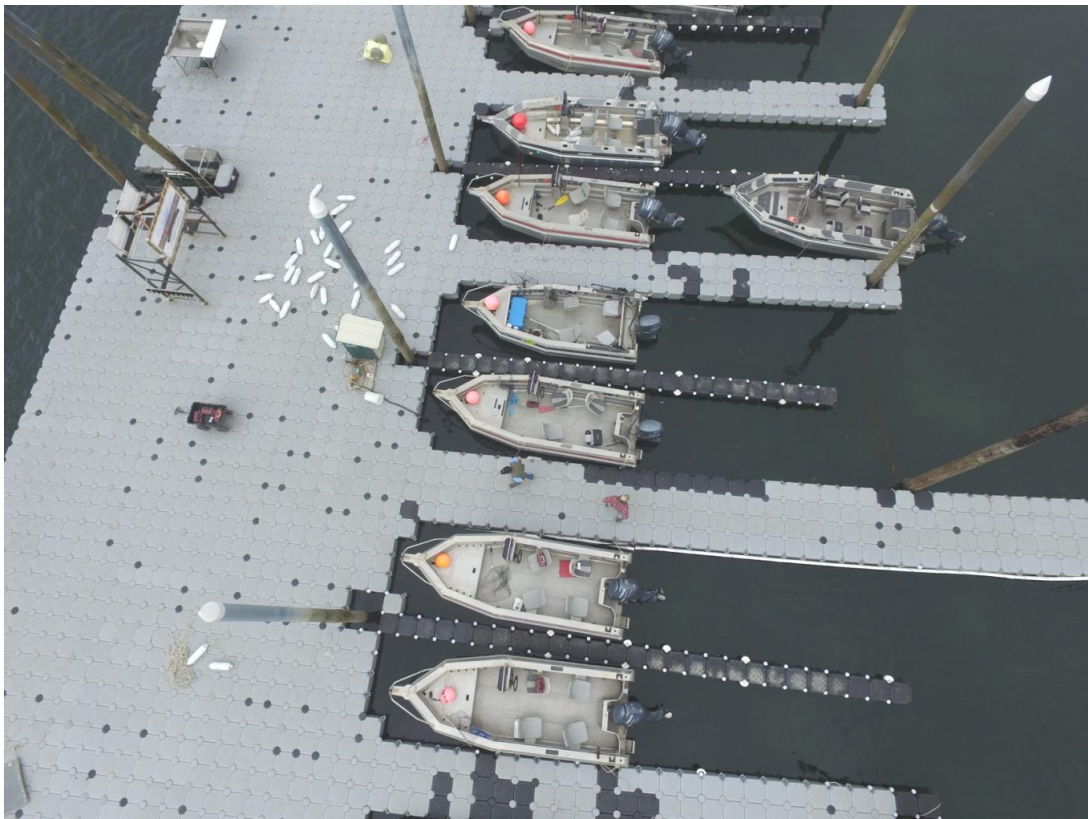
Name: \_\_\_\_\_

- Complete this form Monday on the dock before you head out.
- Familiarize yourself with equipment.
- Check each rod & reel.
- Ask Dock Staff for assistance.
  - Spending a few extra minutes on Monday will improve your fishing.

Sample

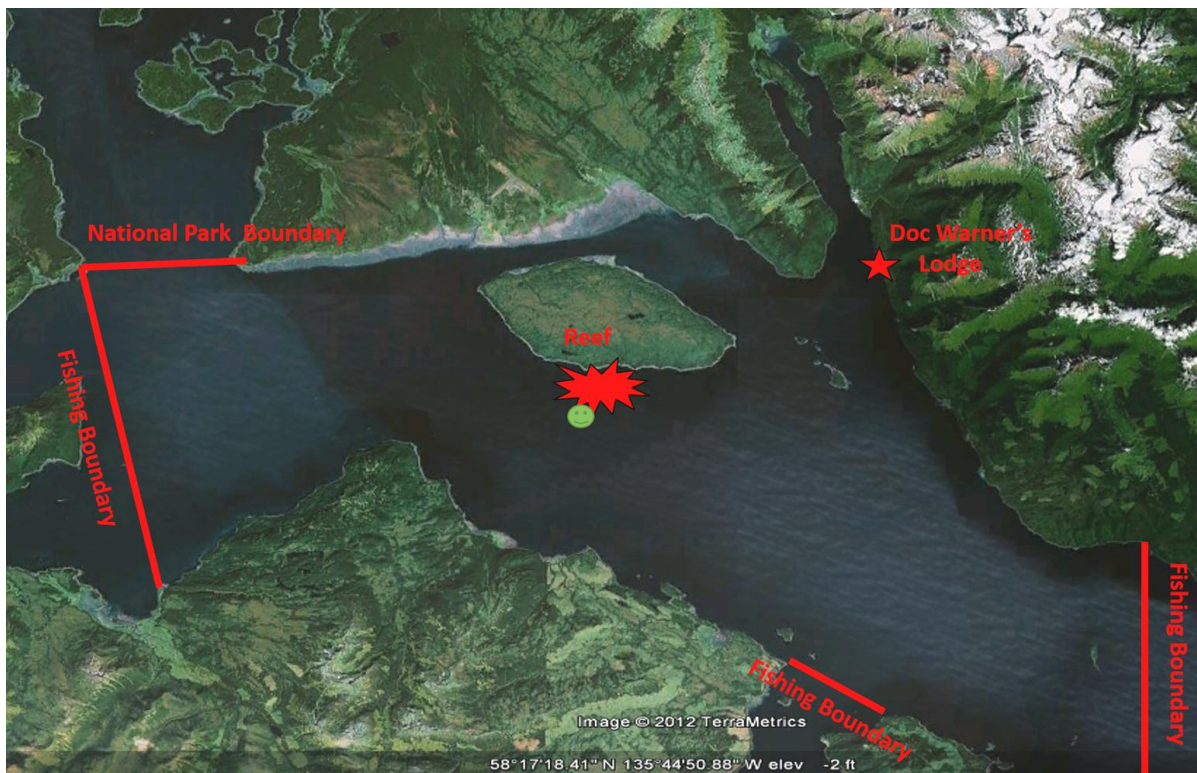
# Boat Equipment

- **Life jackets** - Please wear them.
  - 13 and under are required to wear a life jacket!
- **Kill switch lanyard** - required to be attached to the driver when running at speeds greater than trolling.
- **Keep your boat deck clean!**
  - Use your lunch tote as a garbage receptacle.
  - Rinse off any blood before it dries.
  - Don't let waste or garbage get into the bilge.



# Boating Do's & Don'ts

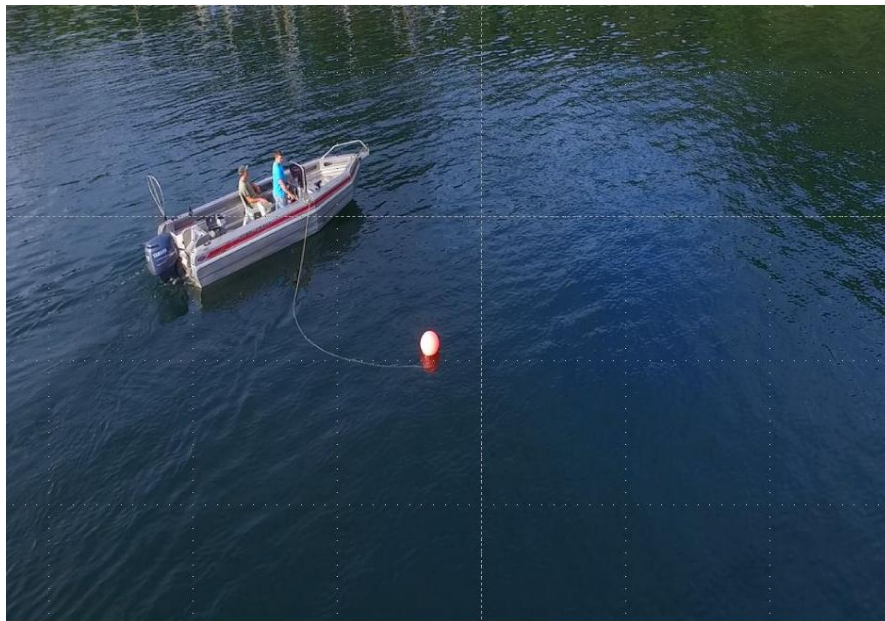
- If fishing line or anchor roap gets in the prop:
  - Turn the engine off and contact lodge (907-723-6000)
- If the engine starts making strange noises.
  - Turn the engine off and contact lodge (907-723-6000)
- Avoid floating debris, wildlife, and commercial traffic.
- **Do not approach within 300 feet of wildlife.**
- Do not chase or disturb wildlife.
- Be courteous of others viewing wildlife – don't cut them off.
- Never take a boat to shore.



# Setting the Anchor

Boats have about 400' of anchor line

1. Play out rope until the anchor is on the bottom.
  2. Play out additional slack (20-40') to allow for current & drift.
  3. Engage the slider mechanism and toss the buoy over.
  4. Play out an additional 10-20' between the buoy and boat.
  5. Increase the amount of slack in heavy current.
- Heavy current may pull the buoy under the water.
    - If the anchor is holding, this is okay, but there may be too much current to keep tackle on the bottom.
  - The zip-tie is designed to break if anchor hangs when pulling.
    - This allows the anchor chain to pull from the tines.
    - Do not bypass or render unusable the zip-tie break-away.
  - Extra zip-ties are onboard to replace broken zip-ties.



# Pulling Anchor

**Always** tie the anchor rope to the cleat next to the driver.

The boat may swamp if you tie off to the back!



- Keep the rope away from the engine.
- Anchor Stuck?
  - Try pulling in multiple directions.
  - Text the lodge (907-723-6000).
  - **Do NOT cut the rope!**

# Pulling Anchor

1. Tie anchor rope to the cleat next to the driver.
2. Slowly pull away from the buoy while turning slightly to the right and make sure the rope does not tangle in the prop.
3. After the buoy “jumps”, turn your boat towards the rope, put the boat in neutral, **put life jacket on** (if you aren't already wearing it), and pull the anchor in by hand.
4. Repeat as needed.



**See our videos on the web!**

# Radios

- Only use channels 68, 69, 71, 72, and 78A - We use 78A as our primary channel.
- Radio conversations are not private.
- Keep VHF conversations short and for "operational" purposes.
  - Sharing weather, water and fishing information is acceptable.
  - Social chit-chat--talk about sports, movies, or shoreside activities is not acceptable.
  - FCC rules apply, keep it clean.

Hi/Med/Low  
transmission power  
switch.

Default is low, toggle to  
hi to increase range.



Text 907-723-6000 directly for lodge communication.

# GPS/Fish Finder Basics



Using the – and + keys is sufficient for most things.

The PAGES button allows switching between modes.

## Please try to keep the units dry!

### Selecting pages

- press the keypad to the desired page and press ENTER.

### Combo pages

- Press the PAGES key twice to switch active panels.

### Adjusting settings

- MENU will activate current panel menu options.
- Toggle items with ENTER.

### Cursor

- Use keypad to scroll the map, select map items, and review sonar history.
- Press MENU to return to the vessel.

### New waypoint

- Places waypoint at current position or cursor position.

### Navigate to a waypoint

- Select *Goto*, ENTER, follow dialogue.

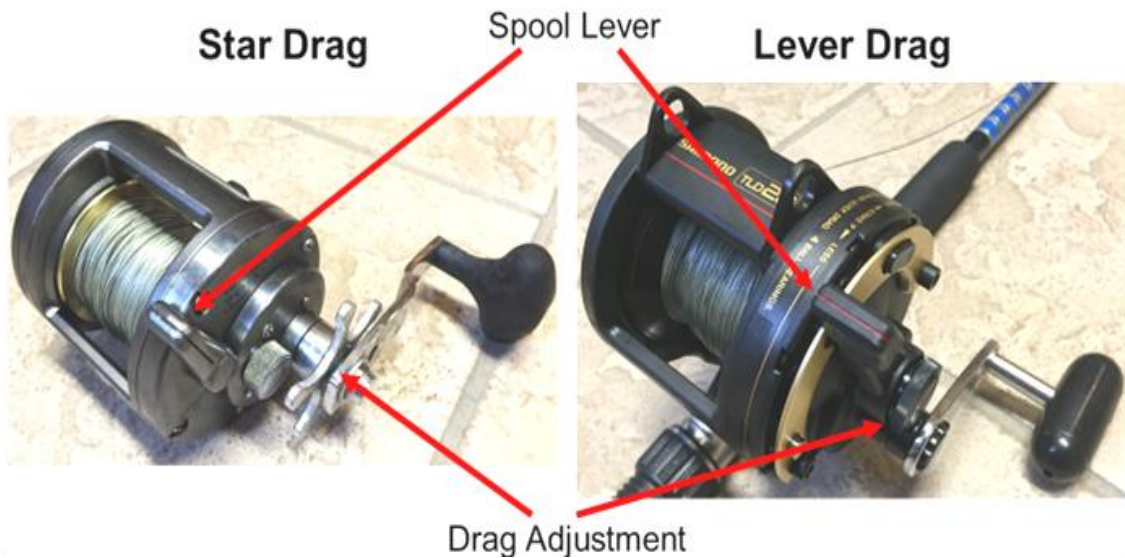
### Cancel navigation

- From the chart screen, press MENU, select *Navigation*, ENTER, select *Cancel*, ENTER, select *Yes*, ENTER.

### Adjusting Brightness

- Tap the power button

# Rod & Reel Care

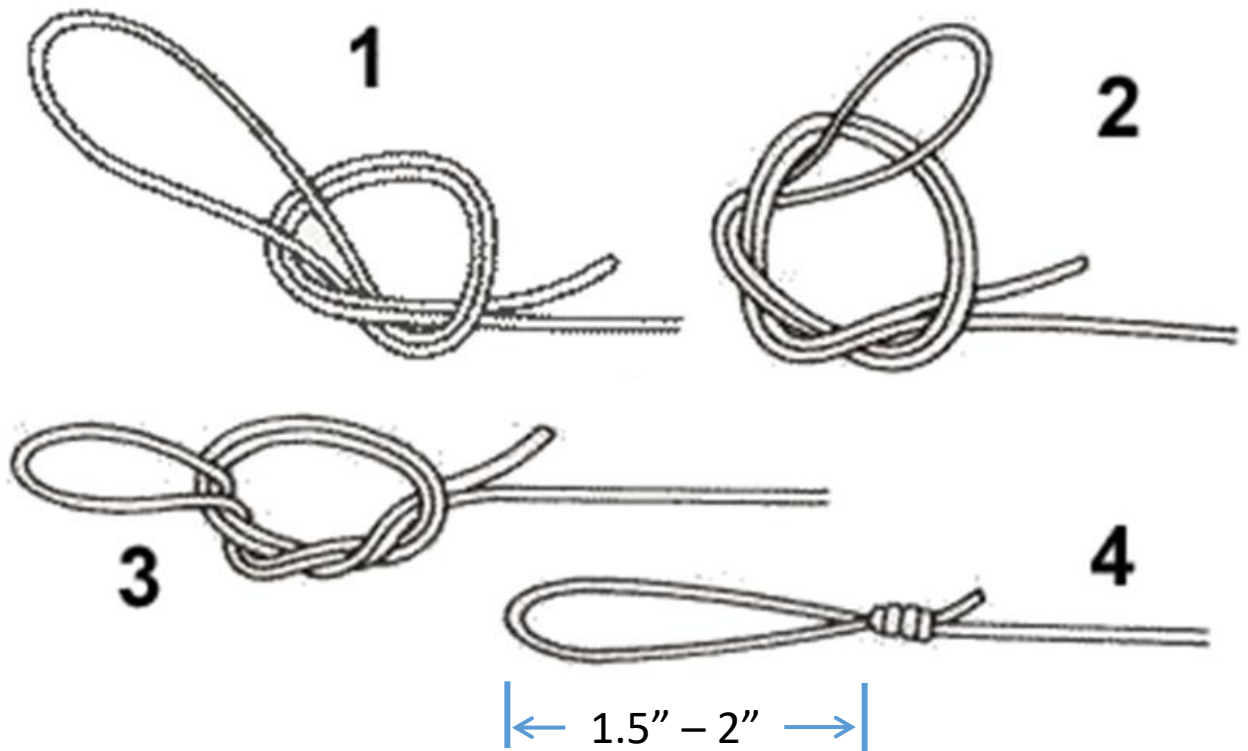


Please help reduce breakage & loss:

- Hold rod tips away from the boat.
- Avoid resting your rod on the side of the boat.
  - Use rod holders.
  - Slightly loosen the drag when using rod holders for halibut.
- Keep rods off the floor (place in rod holders when not in use).
- Test drag frequently.
  - Do not adjust drag when a fish is on.
- Use thumb to apply additional drag or to deploy tackle.
  - Prevents “rat’s nests”.
- Remove all tackle when traveling or not fishing.

# Tying Knots

The **Surgeon's Loop** knot is used for all tackle.



Double the end of the Surgeon's Loop when rigging tackle to increase strength.



# Fishing Regulations

- **Harvest record:**

- Record date and place caught for Kings, Ling Cod, and Sable Fish on back of the license.

- **Limit summary** (subject to change):

- Silver, Chum, Red & Pink – 6 of each per day.
- Kings – 1 or 2/day, 28” minimum, see current regs.
- Halibut – 2/day, no size restrictions.
- Pacific Cod – no limit.
- Pelagic Rockfish – 5/day.
- Slope Rockfish – 1/day.
- Dermersal Rockfish – Closed.
- Dolly Varden – 10/day.



## Remember ...

- Any part of a Pink or Chum salmon may be used for bait.
- Only one line in the water, per angler, at a time.
- **Do not** “bucket” fish. Keeping a smaller fish alive in the fish well in hopes that a larger one is landed and then exchanging fish is a very expensive fine.

# Fishing Tackle

Doc's provides bait tackle including:

rods, reels, weights, hooks and bait.

- Doc also provides the first salmon rig; purchase additional rigs in the Pro Shop.
- Artificial lures, flashers, squid (hoochies), grubs, and jig heads are available in the Pro Shop.



- Spin casting rod/reel combos are available for use; ask staff for assistance.
  - Pixie lures work well (available in the Pro Shop).
- Bait jigs are available in the Pro Shop.
  - Have fun catching your own fresh bait!

# Salmon Fishing

Artificial tackle will **improve** your success in fishing for salmon!

**See Pro Shop for rigging examples!**

8" & 11" Flashers.

Spin or zero drag flasher.

4, 8, 10 ounce weights set up.

Leader length may play a role.

**See Pro Shop for suggested lengths.**

Choose hoochie and flasher color based on depth.

**See Pro Shop placards for more details.**



# Baiting the Hook for Salmon

- Artificial rigging is considered more effective.
  - i.e. No Bait.
  - More likely to catch Sockeye without bait.

HOWEVER,

- If you bait, here are three traditional methods:

- **French Fry** (preferred method)

- Pictured with hoochie and skirt insert on the right.
- ¼ to 3/8” wide strip about an inch long.
- Only bait upper hook.
- Too much bait interferes with action.

- **Cut plug** – used for mooching

- Double bevel cut.
- Looking for a slow roll in the water.
- Ask staff to demonstrate.
- No hoochie or flasher required.
- Example videos:
  - <https://youtu.be/yq3N6Ulyqyw>
  - <https://youtu.be/1jfwCSyV-7o>
  - <https://youtu.be/evkMYh39krs>
  - <https://youtu.be/vtW7ekye6uE>

- **Cut Strip**

- Fillet a side of herring.
- Looks like a little fish fluttering.
- Hook so bait pulls straight in the water.
- Ask staff to demonstrate.
- Can use hoochie and flasher.
- Example videos:
  - [https://youtu.be/nplCy9\\_pl60](https://youtu.be/nplCy9_pl60)
  - <https://youtu.be/SaMUPqwJ0cM>



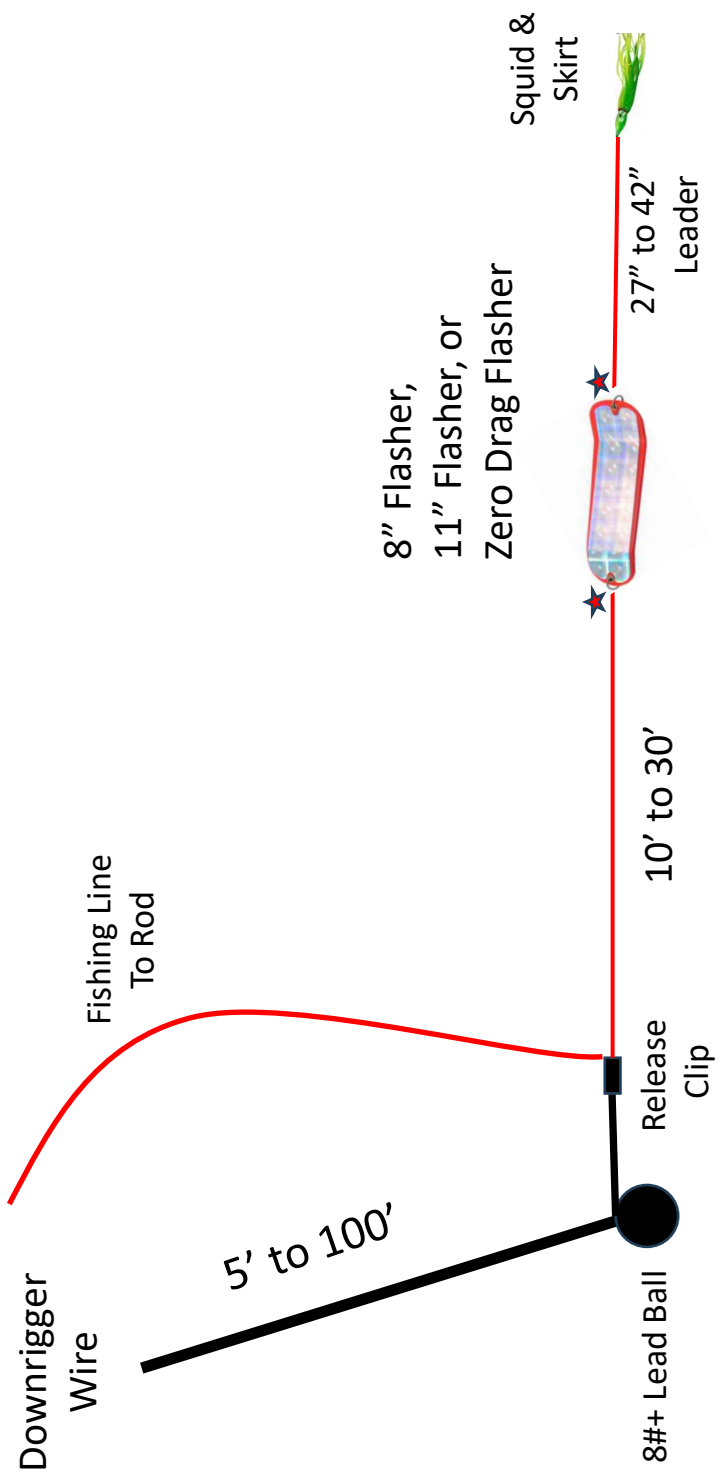
# Preparing Salmon Bait



## Thoughts on bait

- Keep bait fresh by leaving the lid on the cooler.
- Too much bait interferes with the action of the hoochie.
- Hook bait on the top hook under the hoochie.

# Downrigger Fishing Set Up



★ Add swivels where appropriate

# Downriggers

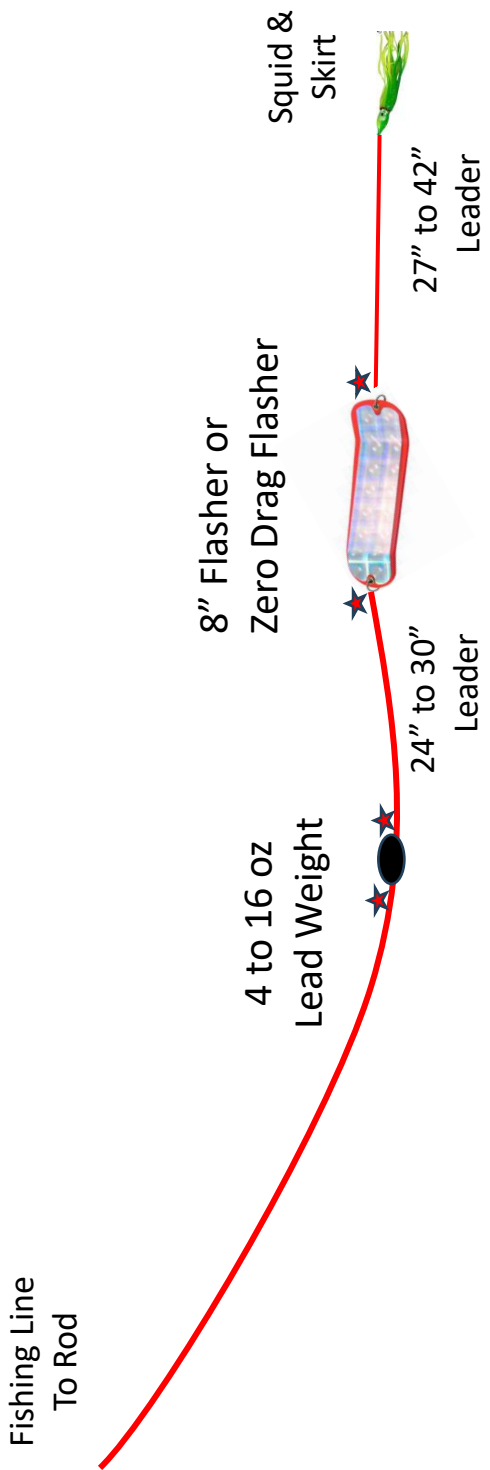
## Demo with Staff on Monday

- Keep line out of Prop.
  - Two-hand operation. Use the brake!
  - Don't turn boat too sharply.
  - Swing boom inside and stow weight for travel.
- 
- Trolling Speed – just put the boat in gear!
    - Don't grind gears.



# Shallow Fishing (no downrigger)

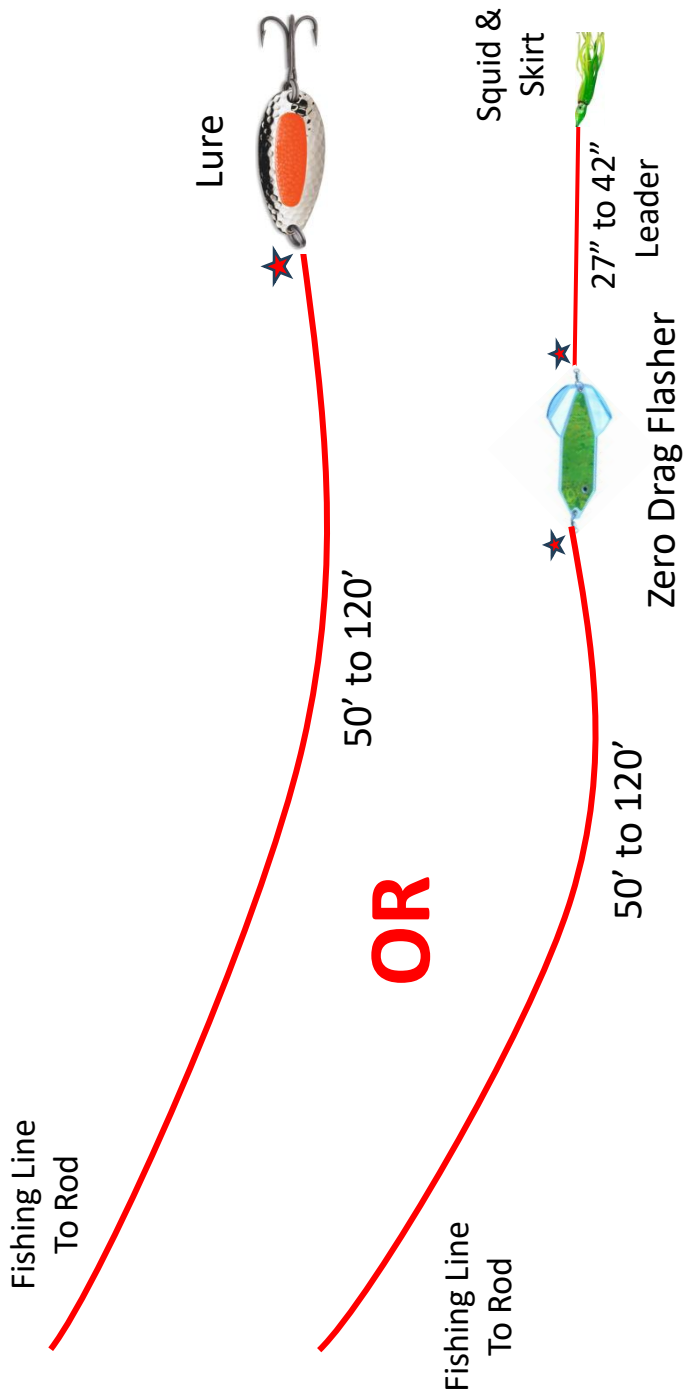
8' to 25' depth



★ Add swivels where appropriate

# Top Water Fishing

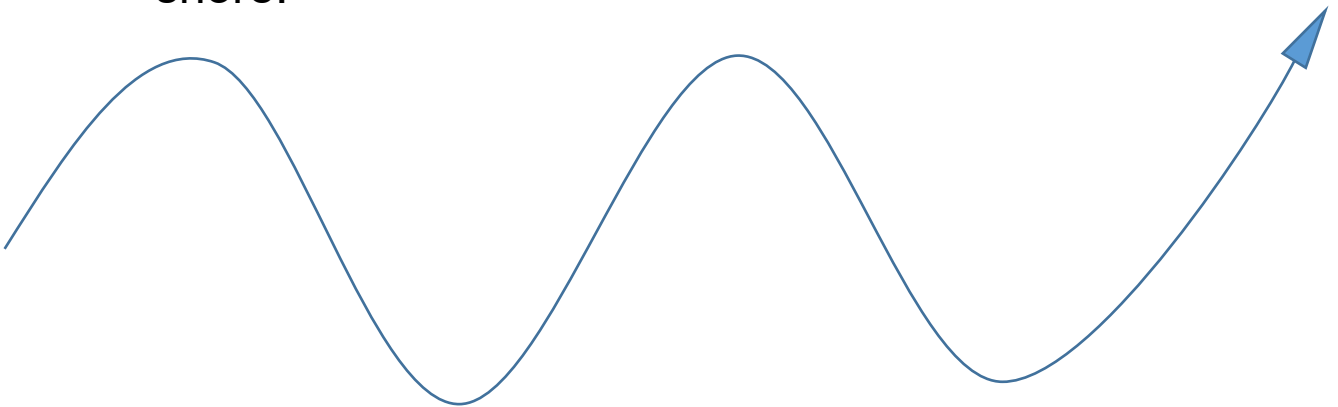
Near the surface



**Both ends of flasher should have a swivel.**

# Trolling for Salmon

- Boat in gear and at idle speed.
  - Relative speed 2.0 to 3.5 mph.
  - May need to adjust speed based on current.
- S-curves
  - Inside line drops and outside line rises.
  - Not too tight of turn.
    - Beware downrigger cable and fishing lines in prop.
  - If line gets in the prop – STOP.
    - Get it all out in one piece = OK.
    - **IF** the line breaks in the prop = CALL lodge (907-723-6000) and stop engine.
- Avoid commercial traffic.
  - They have lots of gear in the water, troll in a straight line, may be on autopilot and not actively watching for you in the water.
  - Local convention: boats with starboard (right) side toward the shore have right of way and troll closer to shore.



# Landing Salmon

1. Keep net against side of the boat. Drag the fish across the mouth of the net.



2. Lift slightly to bring the hoop of the net above water.



## Tips:

- Put the boat in neutral.
  - Watch out for commercial traffic.
- Raise the downriggers.
- If the salmon is staying on one side, lower opposite lines to 25' - 35'.
  - A fighting fish will attract other fish.
- Fish lay on their side when tired.

# Landing Salmon



3. Lift vertically to close the purse of the net. Lift with the netting. Never lift horizontally (pitch forking).



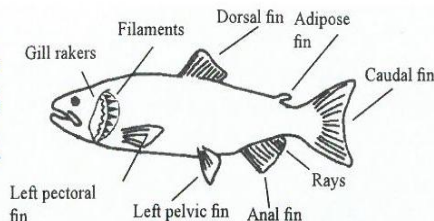
**4. Identify the species.**

Use the club on keeper fish. Bleed out your catch to keep the meat fresh.

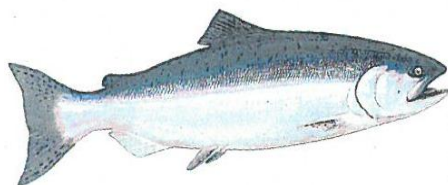
More Tips:

- Once landed, put boat in gear and make sure lines do not get into the propeller.

## HOW TO IDENTIFY SALMON, TROUT, AND OTHER SPECIES COMMONLY FOUND IN ALASKA

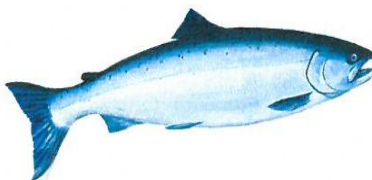


### ALASKA'S WILD SALMON ARE FOUND IN BOTH FRESH AND SALTWATERS



**King (Chinook) Salmon**  
*Oncorhynchus tshawytscha*

Small black spots on back and both lobes of tail. Gum line on lower jaw black. Less than 25 gill rakers, 15-17 anal fin rays. The largest of all Pacific salmon, 30-55 inches.



**Silver (Coho) Salmon**  
*Oncorhynchus kisutch*

Small black spots usually occur only on upper lobe of tail and on back. Gum line on lower jaw not black. Scales large; less than 25 gill rakers, 13-15 anal fin rays. Size 24-28 inches.



**Sockeye (Red) Salmon**  
*Oncorhynchus nerka*

No distinct black spots on back or tail; over 30-40 long, fine, serrated and closely spaced gill rakers over 12 anal fin rays. Relatively large eye, Size 18-24 inches.



**Pink (Humpback) Salmon**  
*Oncorhynchus gorbuscha*

Large oval black spots on back and on both lobes of tail; scales very small; usually over 12 anal fin rays; males develop a pronounced hump during spawning. Size 15-24 inches.



**Chum (Dog) Salmon**  
*Oncorhynchus keta*

No distinct black spots on back or tail; 18-28 smooth, short, stout, and widely spaced gill rakers; usually over 12 anal fin rays. Size 24-32 inches.



**Dolly Varden/Arctic Char**  
*Salvelinus malma, S. alpinus*

Round, red, pink or yellow spots on sides, tail slightly forked; 8-12 anal fin rays; no dark green wavy marks on back or dorsal fin. Arctic char occur from Bristol Bay to polar regions.

## Before you kill it...

- Lift fish net by the netting.
- Identify whether it is a King Salmon
  - Release Kings under 28".
  - Kings require a stamp to keep.
- Decide if you are going to keep it.

# Identifying King Salmon



**Size** –MINIMUM OF 28 INCHES.

**1. Jaw** – solid lower black mouth and gum line.

**AND**

**2. Tail** – silver foil in tail; often has precise black spots.



# King vs. Pink

## King



Silver tail with small black spots.



## Pink

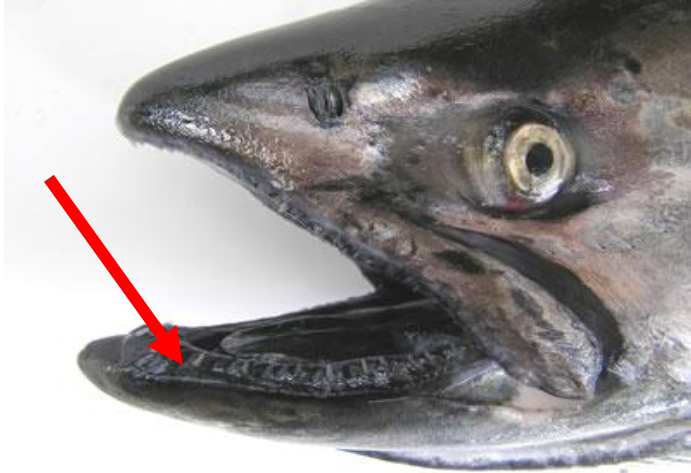


Little or no silver tail with oval black spots.

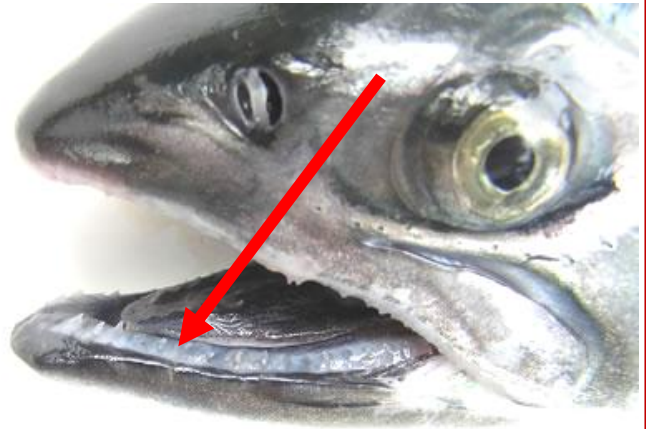


# Salmon Gum Lines

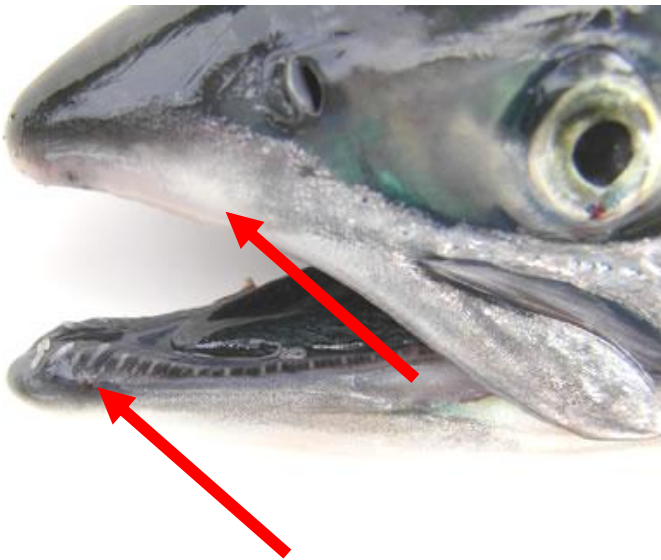
**King** (Black)



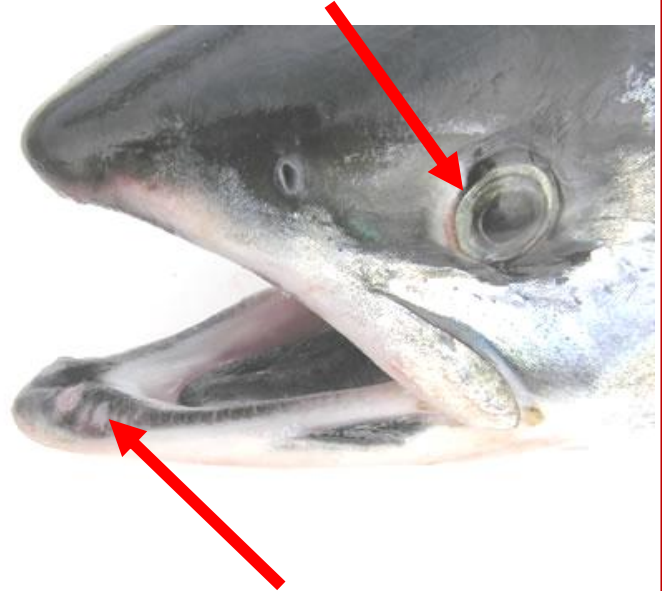
**Silver** (White gums)



**Pink** (Mixed colors)



**Chum**  
(Mixed colors, big front teeth)  
(Large pupil to eye ratio)



# Silvers vs. Chum

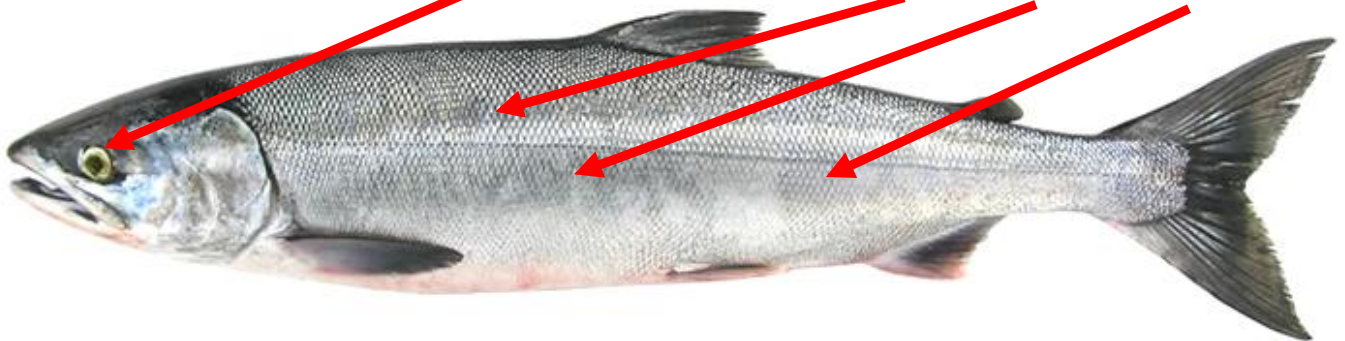
## Silver

- White gum line



## Chum

- Big front teeth
- Big pupil to iris ratio
- Watermark stripes



# Always Bleed Your Catch

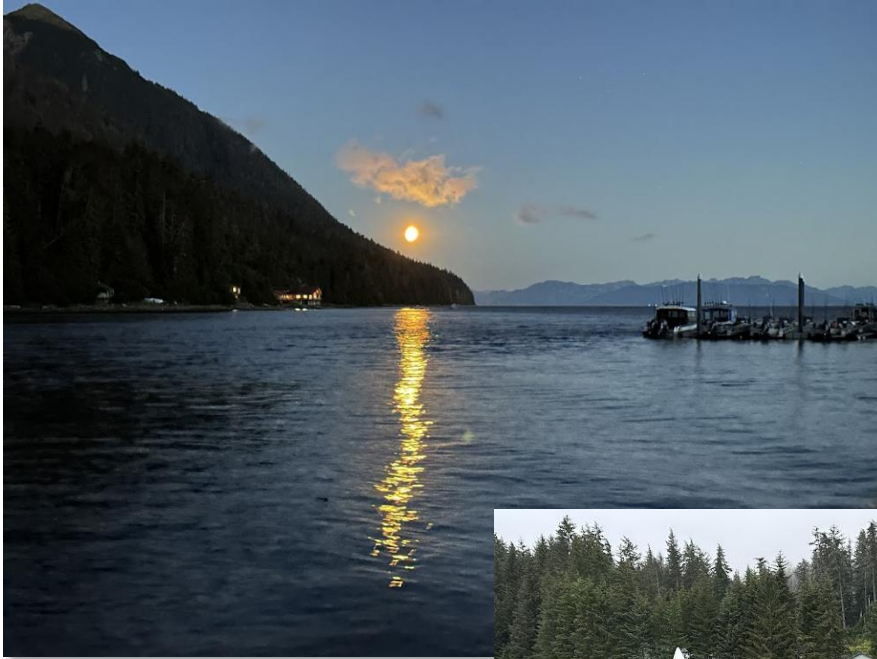
## Improves Meat Quality

- If keeping Salmon
  - Tear out the gills or cut through the white gill rakers with a knife.



- If **NOT** keeping Halibut?
  - DO NOT SHARK HOOK!
- If keeping the Halibut?
  - Use a knife to cut through at least two gill rakers (the white part).





# Halibut Fishing Methods

Bait-n-wait (anchored) & Jigging (drifting)  
are equally effective methods

## Anchored

### Pros:

- Scent cone field attracts fish.
- Easy method to fish.
- Stay on a sandy bottom.
- Target structures under the water.

### Cons:

- Harder to stay on bottom in strong currents.

## Drifting

### Pros:

- Travel an area.
- No anchoring but can be used while anchored.
- More active.
- Good for jigging.
- Targets a flat or gradual sloping area.
- No bait – use jigs.
- Good for J-hooks.
  - Hard hook set.

### Cons:

- Might snag bottom.

\*\*Be a good sportsman! If you foul hook and kill a small fish, keep it as part of your daily limit.

# Fishing for Halibut

## Anchored

- Using the GPS, find a level, sandy, smooth bottom or waypoint and set the anchor.
- Rig your line. Use as little weight as possible to stay down.
- Let out your fishing line until you feel it hit the bottom. It should feel soft. If you feel big rocks, move.
- Gently jig or roll the weight along the bottom.
- Check regularly to make sure the weight is still on or near the bottom. Add weight if it isn't.
- Rapid strikes are usually crab. Reel bait up a couple of feet.
- Long hard strikes are halibut. Wait for the fish to take the bait.
- Pull in response to the fish pulling. Use PVC belt.
- Once set, raise pole up then reel while allowing pole to drop.

## Drifting

- After you have arrived at your chosen fishing location, test the current to ensure you will drift along the sandy bottom and not into rocks.
- Proceed as above.

# Halibut Fishing Equipment On Your Boat



## Shark Hook

- Used to secure your fish and bring it into the boat.

## Bat

- Used to stun the fish while landing it.

## PVC Fighting Belt

- Used while reeling in the fish to prevent bruises and protect rain gear.



# Halibut Tackle

## Provided by Doc's

- Weights, hooks, leader

## Available in the Pro Shop

- Chum Bags (fill with bait or perforated scent bottle and tie to anchor rope)
- Scents
- Bomber Squid
- Jigs and Grubs
- Bait Wrap



# Baiting for Halibut

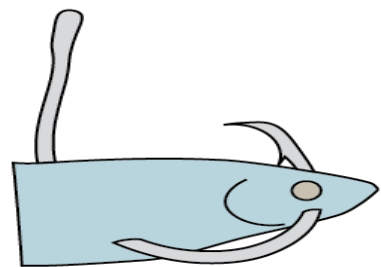
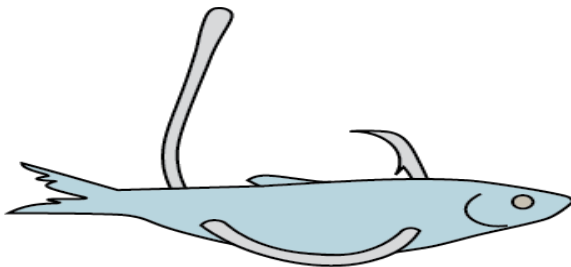
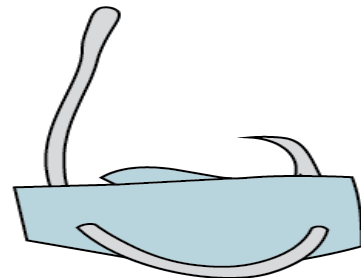
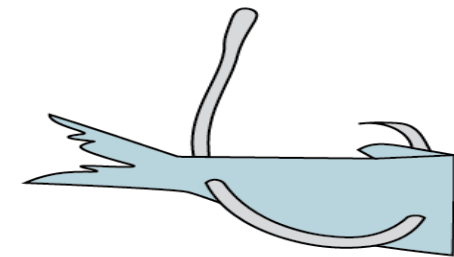
**PRESERVE QUALITY –**  
Keep the lid on the bait cooler!

- Conserve bait
  - Use 1/2 or 1/3 herring
- Acceptable Baits:
  - Herring
  - Salmon
    - Pink & Chum only
  - Cod
  - Pollock



Example of salmon head with herring bait set-up

- NO KINGS, SILVERS, or REDS.
- NO ROCKFISH.



**Tip: For better fishing, hook bait like shown above.**  
**Note relationship of hook tip to bait head.**

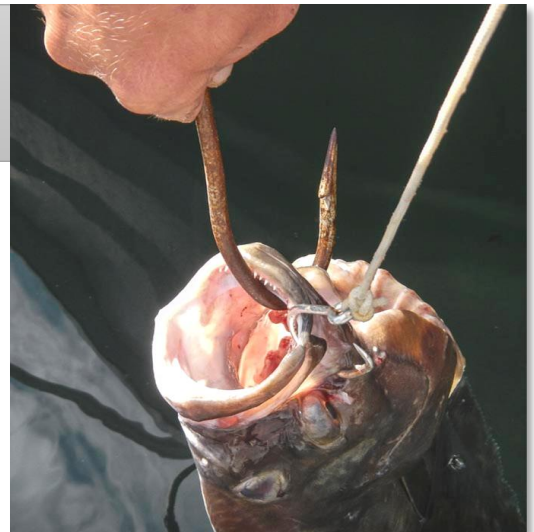
# Landing Halibut (Keeper )

*Before the fish comes to the surface, locate the shark hook, bat and fillet knife.*

1. Keep the nose of the fish under the water until ready. Lift and wait for the mouth to open.



2. Place the shark hook into the mouth and out the lower jaw. This takes a little force. Try not to touch the lips; the fish will close its mouth if you do.



# Landing Halibut (Keeper)

3. Keep tension on the hook and lower the fish to thrash in the water. Resist the urge to pull large halibut out of the water before they are done thrashing. When the fish relaxes, raise it up and hit it **hard** with the bat between the eyes.



4. Quickly bring the halibut into the boat while it is stunned. You'll have about 30 seconds to do this. Put the fish into the well. If it comes back alive, let it thrash inside the well.

5. Once it has calmed down, remove both your hook and the shark hook.

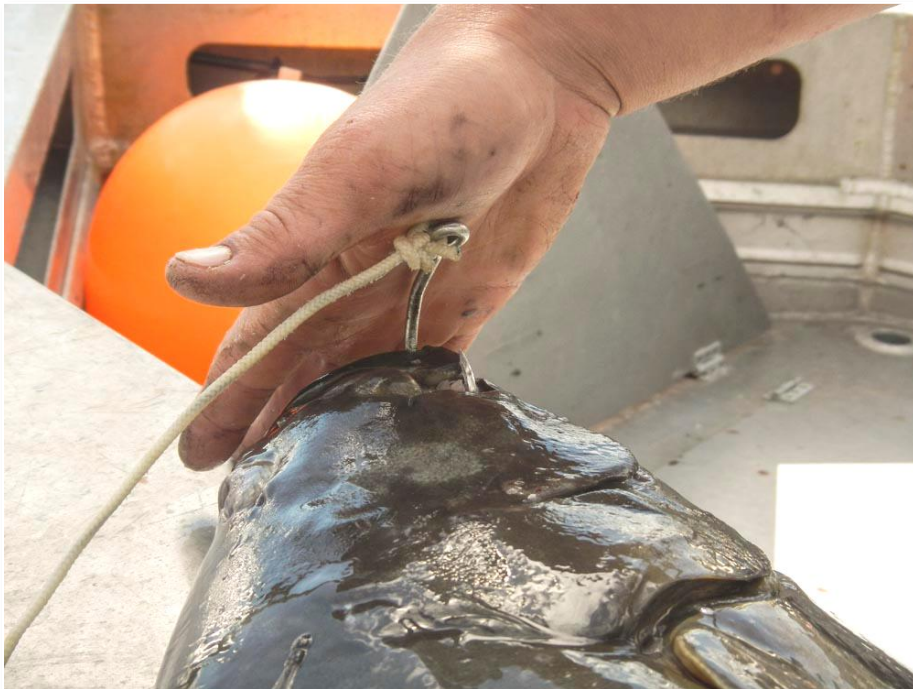


6. Bleed the halibut to keep the meat fresher. Use a knife to cut through at least two gill rakers (the white part).

# Halibut – Not a Keeper

## DO NOT SHARK HOOK

- Pull fish out by the leader.
- Squeeze the wrist of the tail tightly.
  - Fish will go rigid and stop fighting.
- Push hook down and away with your palm.
  - Should hear popping noise.



- Remove the hook and drop the fish back into the water.

# Halibut & Other Fish



## Pacific Halibut

*Hippoglossus stenolepis*

More elongated than most flatfishes, with width being about one-third the length. Adults have both eyes on their dark or upper side. Color on the dark side tends to assume the coloration of the ocean bottom. The underside is lighter, often white.



## Lingcod

*Ophiodon elongatus*

Brown to reddish-brown with spots or blotches. Sharp teeth. Elongated body, large head and mouth, no barbel. Single dorsal fin, notched past the middle of its length. Can grow to 5 ft.

**Limit:** 1 per day, 1 in possession; 30-35 inches or 55 inches and longer, annual limit of 2 fish, one of which is 30-35 inches in length, and one that is 55 inches or greater in length, record retention on harvest record on license.

**Seasonal Closures** – check current regulations



## Arrowtooth Flounder

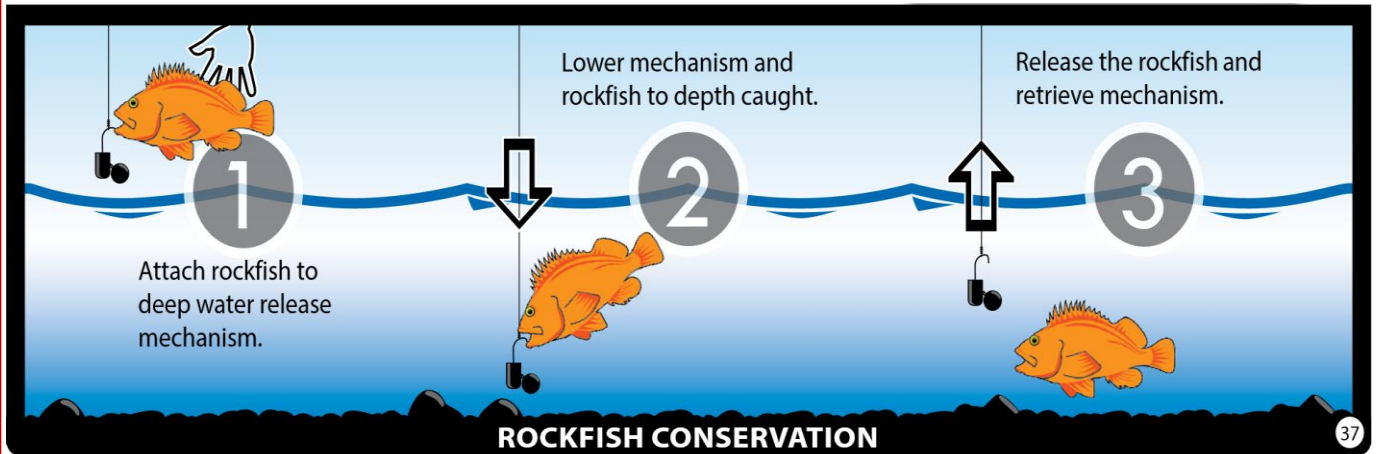
*Atheresthes stomias*

Large mouth and numerous sharp teeth. Little arching of lateral line. Upper eye reaches top of the head. Length to 34 inches.

**Limit:** Inedible.



# Releasing Rockfish



All rockfish that are **NOT** harvested: return to the depth of capture, or to at least 100 feet, whichever is shallower.

# Pelagic Rockfish

RETENTION IS ALLOWED – 5/day in the family

WHEN IN DOUBT, TAKE A PICTURE AND THROW IT OUT.

Don't keep fish you are unsure of. Many have special limits and restrictions. We will help identify the picture back at the lodge.

**All rockfish** that are not harvested: return to the depth of capture, or to at least 100 feet, whichever is shallower.

**Pelagic Rockfish:** *Six pelagic species of rockfish are often found mid-water in schools, close to rocky structures. These fish are moderately long-lived (most fish are 7-30 years old).*

## Dark Rockfish<sup>††</sup>



Uniform black to dark brown body with slightly lighter belly, three pores on each side of lower jaw, sides just above anal fin darkly colored. Length to 23 inches.

## Dusky Rockfish<sup>††</sup>



Brownish body with lighter belly, tinged with pink or orange, three pores on each side of lower jaw, sides just above anal fin lightly colored, two dark bars on each cheek. Length to 24 inches.

## Yellowtail Rockfish<sup>†</sup>



Olive green to greenish brown with lighter under-side; fins distinctly yellowish green. Length to 26 inches.

## Widow Rockfish<sup>†</sup>



This is a relatively slim species in various shades of brown or brass that lighten towards the belly. Length to 23 inches.

## Black Rockfish<sup>†</sup>



(Black Bass); Dark gray to black with white belly. Usually uniform in color, but may have lighter patches along back. No pores on lower jaw. Length to 25 inches.

# Slope Rockfish

**RETENTION IS ALLOWED – 1/day in the family**

Other nonpelagic slope rockfish not pictured include: blackgill, blackspotted, blue, bocaccio, brown, chilipepper, darkblotched, greenstriped, harlequin, northern, Pacific ocean perch, Puget Sound, pygmy, redstripe, sharpchin, shortbelly, splitnose, stripetail, and yellowmouth.

Commonly caught



Redbanded



Shortraker



Rougheye



Vermillion



Silvergray

**All rockfish that are not harvested: return to the depth of capture, or to at least 100 feet, whichever is shallower.**

**When in doubt, take a picture and let it go!**

# NON-PELAGIC DEMERSAL SHELF ROCKFISH

## RETENTION IS PROHIBITED

### Nonpelagic Rockfish:

*Bottom-dwelling species found on or near the ocean floor, usually in rocky or boulder-strewn habitat. Extremely long-lived (most fish are 15-75 years old).*

#### Quillback Rockfish<sup>†</sup>



Brown body mottled and yellow. Long, high dorsal fin. with orange prominent spines on a Length to 24 inches.

#### Copper Rockfish<sup>†</sup>



Olive brown to copper with pink or yellow blotches, white on sides and belly. Dorsal fins dark copper brown to black with some white. Rear two-thirds of lateral line is light. Length to 22 inches.

#### Silvergray Rockfish<sup>‡</sup>



Greenish to silver-gray body, belly white, tinged with soft orange or pink. Slender body fish with a long lower jaw protruding well beyond upper jaw. Length to 28 inches.

#### Tiger Rockfish<sup>††</sup>



Light pink with five dark red stripes along the side. Two dark bars extend from each eye. Length to 24 inches.

#### Yelloweye Rockfish<sup>†</sup>



Orange red and orange yellow, bright golden yellow eye, fins may be black at tips. Juveniles have two light bands along the side, one on the lateral line and a smaller one below the lateral line. Length to 36 inches.

#### China Rockfish<sup>†</sup>



Mostly black, with bright yellow and white blotches and a yellow stripe along most of the lateral line. Length to 17 inches.

**All rockfish that are not harvested: return to the depth of capture, or to at least 100 feet, whichever is shallower.**

# More Fish



## **Pacific Cod (shown), Tomcod & Pollock**

All have three distinct dorsal fins, and two anal fins. No rigid spines on their fins. Small teeth. Pacific cod and tomcod have a prominent barbel beneath their chin; on pollock it is very small or absent. Pacific cod can grow to 40 inches.

**Limit:** None – keep all you want.



## **Sablefish, AKA “Black Cod”**

*Anoplopoma Fimbria*

Have a streamlined, elongated body, black to dark gray above fading to gray or white in the belly, with two dorsal fins and small teeth. Larger fish found in deep water can grow to 40 inches.

**Limit:** No size limit: 4 per day, 4 in possession. 8 fish annual limit, record harvest on license.

# More Fish



## Kelp Greenling

*Hexagrammos decagrammus*

In the same family as lingcod, but lacking rigid spines on the dorsal fin. Male kelp greenling have irregular blue spots; females are various shades of golden yellow on their heads and fins. Only grow to about 21 inches.

**Limit:** No limit.



## Marine Sculpin – Double Ugly



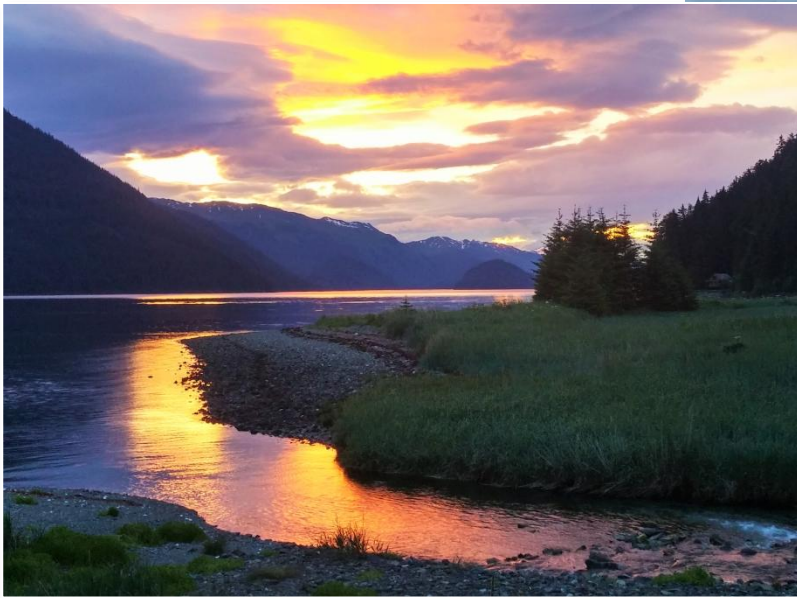
**Throw it back.**

Be careful of sharp horns on the head.

Grab it by the lip, they have sandpaper for teeth.

**When in doubt, Take a pic and throw it back!**

**Already  
missing this?**



**Why wait?**

**Book your next  
adventure now!**

**Call Us @  
801-298-8060**

**See you "reel" soon!**

